



Driving Insights No. 9



Transit Industry: Collisions & Frequency

DriveCam is pleased to continue its Insight Series with a deeper look at collisions in the Transit Industry. In our first Transit Insight Newsletter, DriveCam explored the collision rates of different vehicle types in the transit industry. This newsletter examines the frequency of collisions and near collisions by month of the year, day of the week and hour of the day.

DriveCam’s Video Event Recorder is capable of not only identifying collisions, it also allows DriveCam to identify near collisions that could have been avoided. This study focuses on the distribution of the collisions and near collisions identified in 2009 by month, day and year; specifically comparing commercial transit fleets to an aggregation of commercial fleets in various other industries (construction, distribution, energy, utilities, telco and waste).

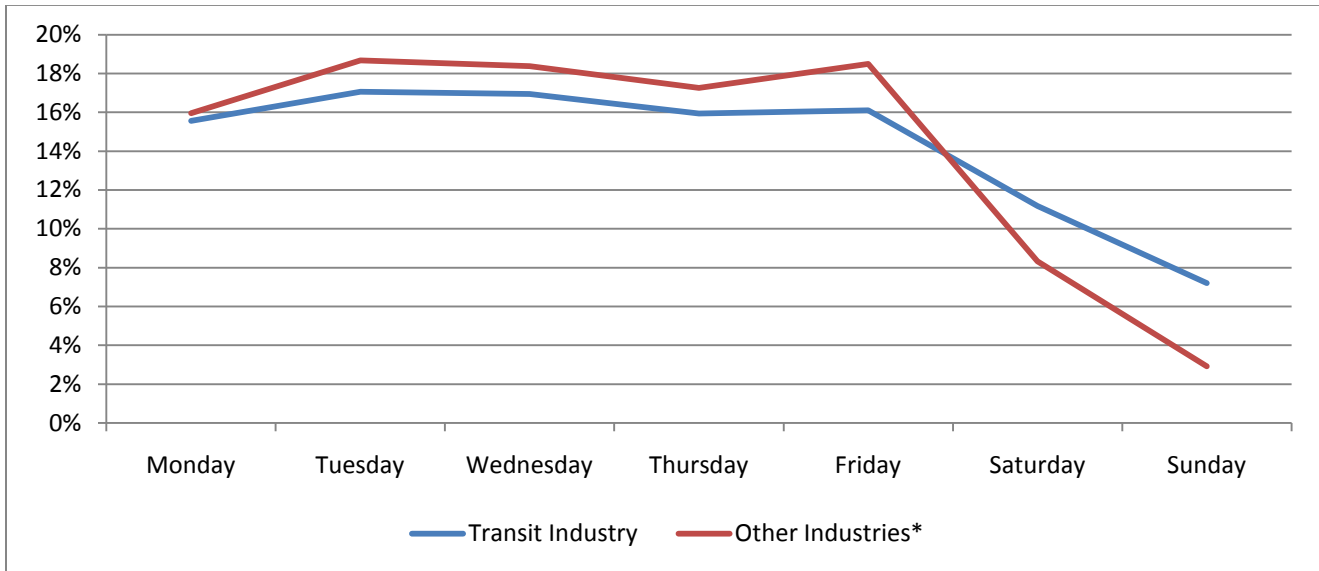
Collisions/Near Collisions by Month of the Year

- The transit industry collision/near collision frequency rate lags other industries from January to August.
- The transit industry sees an increase in collision activity beginning in September with a peak in October when 15% of collisions/near collisions occur in the transit industry.
- On average, the transit industry’s collision and near collision frequency rate is 30% greater than other industries between September-December.



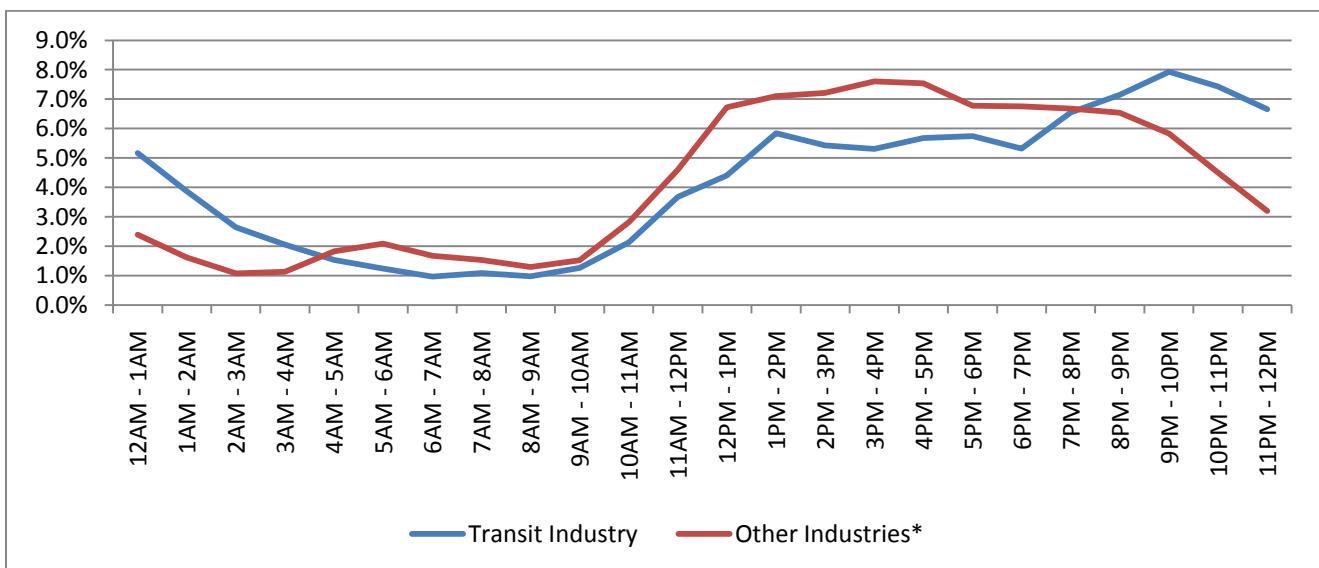
Collisions/Near Collisions by Day of Week

- The transit industry’s collision/near collision frequency rate is, on average, consistently lower than other industries, Monday-Friday.
- The transit industry’s collision/near collision frequency rate is fairly steady from Monday to Friday, ranging between 16% and 17%.
- Due to weekend operations, the transit industry has a higher collision/near collision frequency rate than other industries (11% compared to 8% on Saturdays, and 7% compared to 3% on Sundays) on these days.



Collisions/Near Collisions by Hour of Day

- The transit industry’s collision/near collision frequency rate is at its lowest in the morning hours between 6AM and 10AM (a total of 4% of collisions/near collisions happen during this time).
- The transit industry’s collision/near collision frequency rate continues to ramp sharply at 10 AM, peaking at 9PM and remaining high until 1AM.
- Just over 34% of collision/near collisions occur between 9PM and 1AM in the transit industry, compared to 23% in other industries.



About DriveCam's Driving Insights

DriveCam's *Driving Insights* is designed to provide insight for executives and managers throughout a variety of transportation industries. It is derived from DriveCam's extensive database of driving events from over 3 billion driving miles – the largest in the world. *Driving Insights* is released on a regular basis.

DriveCam Inc.
San Diego, California, USA
+1 (858) 430-4000

info@drivecam.com

As proven experts in the science of safe and efficient driving, DriveCam prevents collisions and reduces fuel costs by improving the way people drive. Our solution addresses the causes of poor driving by combining data and video analytics with real-time driver feedback and coaching, resulting in reductions in collision-related costs and fuel consumption in over 150,000 commercial vehicles. In addition, DriveCam has monitored and analyzed data from over 3 billion driving miles and holds the world's largest database of risky driving, which is continually used to improve proprietary analytics and deliver insights into transportation industry trends. DriveCam was recently recognized as #30 in *The Wall Street Journal's* listing of Top 50 Venture-Backed Companies. For more information, visit www.drivecam.com.